

SCREEN₄PRO

High-end energy-saving
LED display

DS Series



SCREEN₄PRO

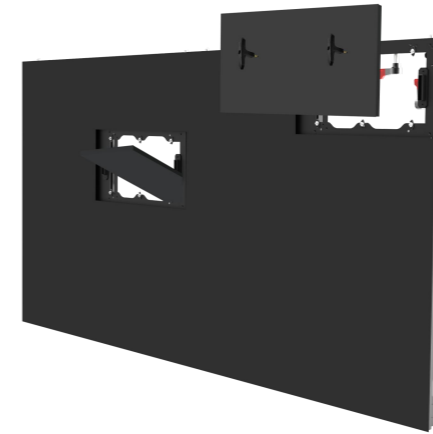
Shenzhen SCREEN4PRO Technology Co., Ltd
Email: sales@screen4protech.com Web: www.screen4protech.com
Add: Songnan Innovation Industrial Park, Guangming District, Shenzhen, China

Shenzhen SCREEN4PRO Technology Co., Ltd



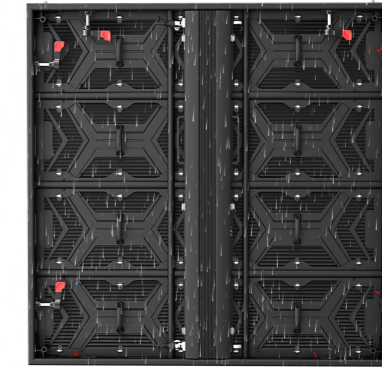
Full-front and Rear maintenance

- Suits for all outdoor applications



Waterproof for both front and back side

- IP65

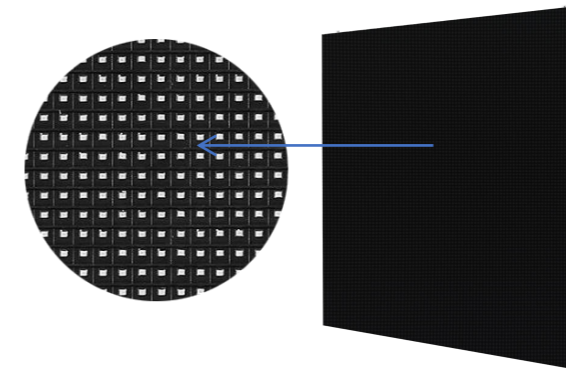


Front side

- Matte corrugation module mask achieves ultra-high contrast

Weight is 35% lighter

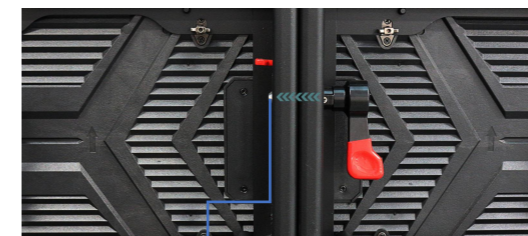
- Ultra-light design reduces stress on the structure



Pixel Pitch	P3.91mm	P4.81mm	P6.25mm	P7.81mm	P10.42mm
SMD Type	SMD1921	SMD1921	SMD2727	SMD2727	SMD2727
Physical Density(dots/m ²)	65536	43264	25600	16384	9216
Module Resolution	128X64	104X52	80X40	64X32	48X24
Panel Dimension(W xH/mm)	500X250	500X250	500X250	500X250	500X250
Module Size (mm)	1000X1000X83	1000X1000X83	1000X1000X83	1000X1000X83	1000X1000X83
Panel Resolution	256X2560	208X208	160X160	128X128	96X96
Module quantity(W xH)	2X4	2X4	2X4	2X4	2X4
Panel Weight(kg)	22.5	22.5	22.5	22.5	22.5
Maintenance Mode	Front & Rear	Front & Rear	Front & Rear	Front & Rear	Front & Rear
Cabinet material	Aluminum	Aluminum	Aluminum	Aluminum	Aluminum
Brightness(Nits)	6000	6000	6000	6000	6000
Color temperature(K)	1000-18500	1000-18500	1000-18500	1000-18500	1000-18500
Viewing Angle(H/V)	140°/160°	140°/160°	140°/160°	140°/160°	140°/160°
Best viewing distance	4-100m	4-100m	6-150m	8-150m	10-200m
Contrast Ratio	10000 : 1	10000 : 1	10000 : 1	10000 : 1	10000 : 1
Frame -changing Frequency(Hz)	50/60	50/60	50/60	50/60	50/60
Drving Mode	1/16 scale	1/13 scale scale	1/8 scale	1/8 scale	1/8 scale
Grey Level	16bit	16bit	16bit	16bit	16bit
Refresh Rate (Hz)	3840	3840	3840	3840	3840
Max power consumption(W/m ²)	650	650	650	650	650
Avg power consumption(W/m ²)	100-200	100-200	100-200	100-200	100-200
Grude	IP65	IP65	IP65	IP65	IP65
Power supply requirements	AC90-264V,47-63Hz				
Working Temp/Humidity(°C/RH)	-20~60°C/10%~85%				
Storage Temp/Humidity(°C/RH)	-20~60°C/10%~85%				
Cert	CCC/CE/RoHS/FCC/CB/TUV/IEC				

Fast installation

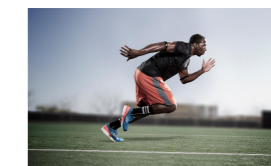
- Quick installation, high flatness



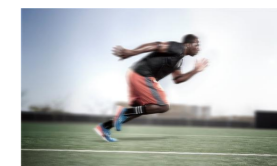
Stainless steel lock catch

High refresh rate&High grey scale

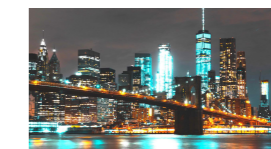
- Stunningly detailed pictures



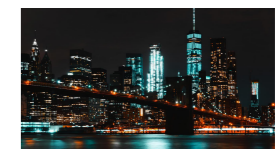
High refresh rate



Low refresh rate



Hig grey scale



Low grey scale