



Outdoor P1.9/P2.85/P3.7/P6/P7.5/P10

FS Series

Fine Pitch Outdoor LED Screen

Shenzhen Screen4pro Technology Co.,Ltd

Address: Songnan Innovation Industrial Park, Guangming District, Shenzhen, China

Email: sales@screen4protech.com



Low transportation costs



Energy saving cost reduction



Fast and low cost installation



Fast and low cost maintenance

√ Full IP66

Full IP66 design both front & back side, without cabinet, air pressure test, dust proof test and water proof test.

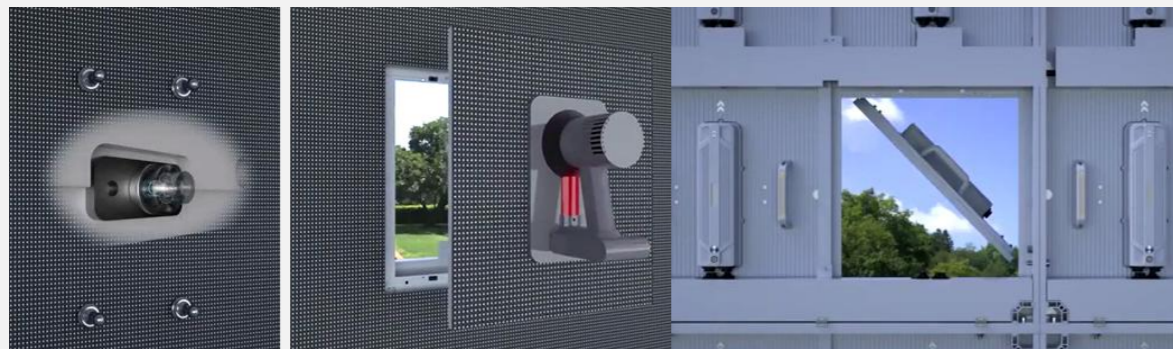


Suitable for high temperature, low temperature, rain, etc

Airtightness and dustproof test, water immersion test, water immersion test

√ Double sided maintenance

Maintenance both frontside and backside



Frontside Maintenance

Backside Maintenance



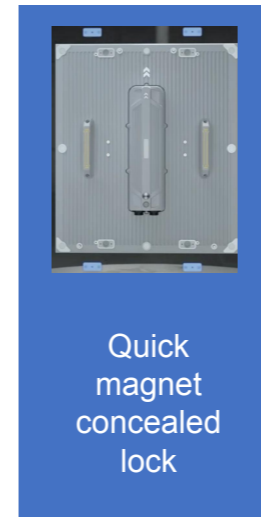
√ Long Warranty
3 years Long warranty



√ Long Life Time
7-10 years life time because low power consumption and low temperature

√ Fast Installation and Hidden wiring

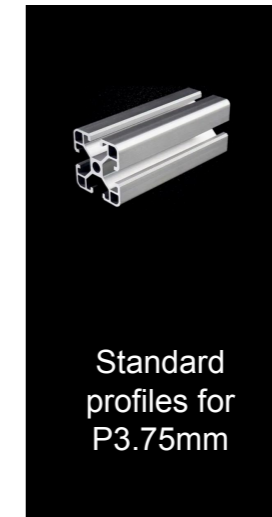
Easy to install, equipped with two bolts and optional for quick locks
The structure adopts USA/European standard alum profile for pitch 3.75mm&6mm&7.5mm&10mm; and customized back frame for P2.8mm&1.9mm



Quick magnet concealed lock



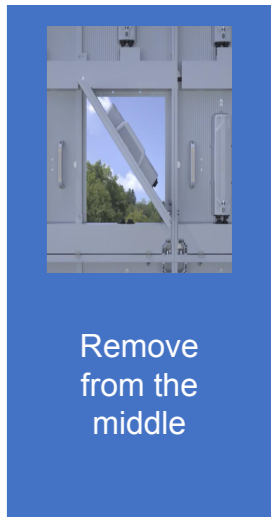
Hide routing



Standard profiles for P3.75mm



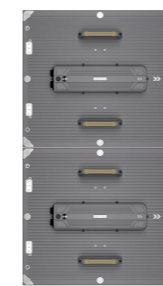
P2.8&1.9 Quick Installation Rack



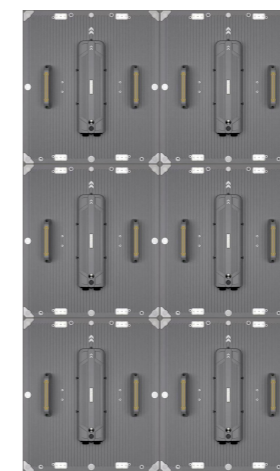
Remove from the middle

√ Display Mode

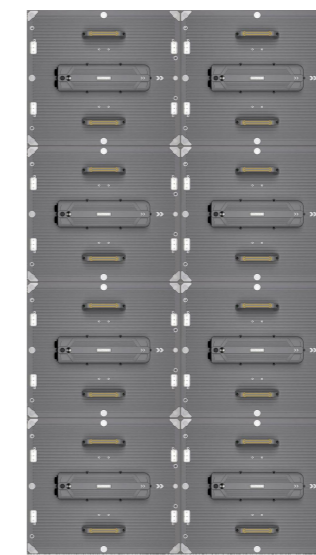
16:9 is optimal display ratio



540*960mm
(43inches)



960*1960mm
(75inches)



1080*1920mm
(86inches)

.....
More sizes available

✓ Lighter Weight

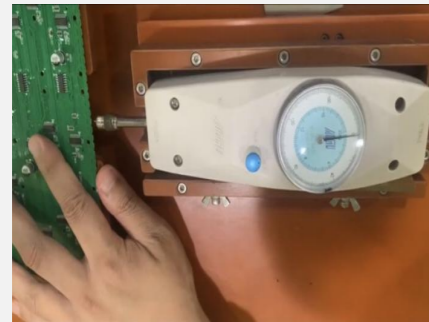
Actual measurement 6.06KG

No cabinet design
23KG/m² VS traditional LED 30KG/m²
0.065CBM/m² VS traditional 0.078CBM/m²

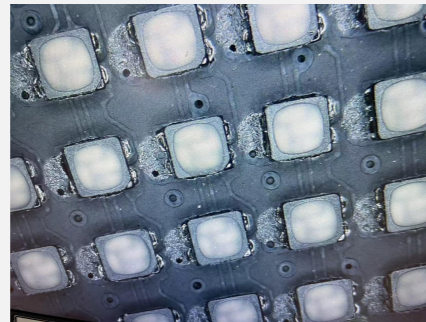


✓ Anti-collision Design

Each LED has pull force above 4.5Kg, and add corner glue PCB, SMT soldering and mask is triple protection to every LED



25N



Lamp corner glue

✓ Energy Saving Design

25% more less power consumption Less 10degree than traditional LED

Item	480x540mm LED module	Traditional 500*1000mm Cabinet
Pitch	Outdoor P2.85	Outdoor P2.97
Brightness	6000cd/sqm	5000cd/sqm
Max Power Consumption	About 580W/sqm/hou	About 730W/sqm/hou
Average Power Consumption	About 190W/sqm/hour	About 240W/sqm/hour
If USD0.1/Kw, Working 10hours/day Total 10 years, Total Electricity Cost per sqm	0.19KW*10*365*10*0.1USD-639.5USD	0.24KW*10*365*10*0.1USD-876USD
Energy Saving Cost Savings: USD236.5/m²		

Specifications

Item	Parameter	
Par Number	FS-019E	FS-028E
Pitch	1.9mm	2.85mm
Brightness	5000nits	6000nits
LED Package	SMD	SMD
LED Type	3in1	3in1
Module Size	480 × 540x65mm	480 × 540x65mm
Module Pixel	252x284 pixels	168x 189 pixels
Scan	1/24	1/16
Housing Material	Die-cast aluminum	Die-cast aluminum
Weight/mm ²	6.06kg	6.06kg
AC Input Power Maximum Value(W/m ²)	560 ± 15%	580 ± 15%
AC Input Power Typical Value(W/m ²)	186 ± 15%	192 ± 15%
Operation Power	AC100~24050/60HZ	AC100~24050/60HZ
IP Grade	Front/BackIP66	Front/BackIP66
Grayscale	16 bit	16 bit
Viewing Angle	160 ° /160 °	160 ° /160 °
Refresh	7680Hz	7680Hz
Working Temperature	40~+60℃	-40~+60℃
Humidity	10% ~ 90%	10% ~ 90%
Maintenance	Front/Back	Front/Back
Operating Life	100,000hours	100,000hours

Item	Parameter	
Part Number	FS-03.75E	FS-06E
Pitch	3.75mm	6mm
Brightness	6000nits	6500-10000nits
LED Package	SMD	SMD
LED Type	3in1	3in1
Module Size	480 × 540x65mm	480 × 540x65mm
Module Pixel	128x 144pixels	80x90 pixels
Scan	1/12	15
Housing Material	Die-cast aluminum	Die-cast aluminum
Weight/mm ²	6.06kg	6.06kg
AC Input Power Maximum Value(W/m ²)	570 ± 15%	570 ± 15% 600 ± 15%(10000nits)
AC Input Power Typical Value(W/m ²)	190 ± 15%	190 ± 15% 200 ± 15%(10000nits)
Operation Power	AC100~24050/60HZ	AC100~24050/60HZ
IP Grade	Front/BackIP66	Front/BackIP66
Grayscale	16 bit	16 bit
Viewing Angle	160 ° /160 °	160 ° /110 °
Refresh	7680Hz	7680Hz
Working Temperature	-40~+60℃	-40~+60℃
Humidity	10% ~ 90%	10%~90%
Maintenance	Front/Back	Front/Back
Operating Life	100,000hours	100,000hours